

Carpet

General Notes

- Review building standard carpet and verify if appropriate for lease term and use of space.
- Design concepts are unique for each global project, and no two projects have identical carpet specifications.
- Amazon has negotiated agreements with three carpet manufacturers.
 - Project teams to specify carpet from Interface, Mohawk, and/or Shaw.
 - All deviations from the above manufacturers must be reviewed and approved by the GREF POC prior to design team's initial selection.
- Amazon projects use carpet tile as the standard for maintenance, efficiency, design opportunity, reduced waste, durability, and cost.
- Carpet tiles with most sustainable backing are preferred. Verify specifications per project, as more sustainable backings may have longer lead times.
- Broadloom carpet is not a standard and shall not be specified. In the event that the GREF POC has approved the use of broadloom carpet, project teams to reach out to WPG for specification assistance.
- Loop construction is preferred for durability and maintenance.
- For GREF POC reviews, provide a minimum of [4] carpet tiles of each style and color for approval.
- It is the design team's responsibility to ensure carpet selections meet or exceed the criteria as outlined in the Carpet Tile Performance Specifications (Carpet Appendix B and C).

Related Information

- Specifications:
 - 096813 Tile Carpeting
- Finish Narrative: Flooring - Base, Transitions and Edge Guards
- Room Data Sheet(s): Confirm carpet requirement per room type.
- Contacts – Global Agreement and Procurement
- Carpet Appendix A: Carpet Tile Performance Expectation by Room Type
- Carpet Appendix B: Carpet Tile Performance Specification For Heavy Use Applications
- Carpet Appendix C: Carpet Tile Performance Specification For Extra Heavy Use Applications
- Carpet Appendix D: Mohawk Product Guide for Amazon

Pattern and Color Considerations

- Carpet selection criteria has been established to alleviate visible staining, soiling, and wear patterns. Style, color, pattern, texture, and construction of the carpet contribute to overall performance.
- No light colors, solid colors or large areas of negative, light colored spaces on patterned carpet (see Carpet Example 8).
- When carpet patterns contain light and dark colors, the majority of the pattern should be a medium to dark color.
- Choose textural solids when the look of a solid color is desired. Consider durability - a textural solid carpet will wear better than a true solid (see Carpet Examples 1- 4).
- Colored accent carpets work best in small areas.

- Solid and textural solid color carpets are not to be used in heavy use areas; high traffic areas or pivot point locations; or as the sole carpet in any room or space. For example, a conference room should not have wall-to-wall solid color carpet.
- Multi-directional patterns perform better than linear patterns due to their ability to minimize visible staining, soiling, and wear patterns (see Carpet Example 5).
- Coordinate carpet with adjacent finishes, in conjunction with proposed lighting, to ensure overall light levels are not too dark.
- Carpet examples 1-16 are for reference only. Above and beyond the construction attributes of a given carpet, teams to ensure that the pattern, texture, and color are suitable for a given application.

Pattern and Color Consideration Examples



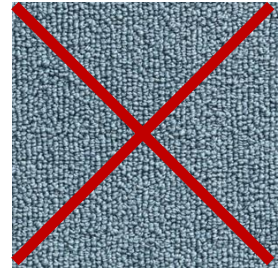
Carpet Example 1
Textural Solid / Small Scale Pattern
- Small scale pattern with contrasting colors reads as a solid, alleviating staining, soiling and wear patterns.
Mohawk 'Kinesthetic Tile'



Carpet Example 2
Textural Solid
- Multi-colored, tonal yarns
- Alleviates staining, soiling, and wear patterns.
Mohawk 'In The Loop Tile'



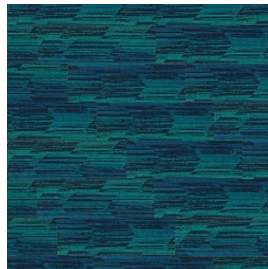
Carpet Example 3
Textural Solid
- Multi-colored, tonal yarns.
- Overall colorway too light. Staining, soiling, and wear patterns more evident.
Mohawk 'In The Loop Tile'



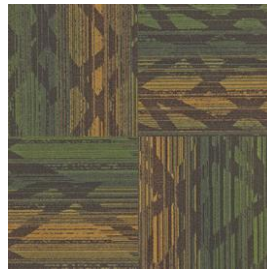
Carpet Example 4
Solid Color
- Staining, soiling, and wear patterns are more evident.
Mohawk 'Color Beat Tile'



Carpet Example 5
Multi-Directional Linear Pattern
- Variation in direction alleviates visible staining and soiling.
Mohawk 'Into It Tile'



Carpet Example 6
Multi-Directional Linear Pattern
- Variation in direction alleviates visible staining and soiling.
Mohawk 'Write Direction Tile'



Carpet Example 7
Multi-Directional Linear Pattern
- Variation in direction alleviates visible staining and soiling.
Mohawk 'Hustle and Bustle'



Carpet Example 8
Large Scale Linear Pattern
- Large areas of light colored negative space.
- Staining and soiling more evident.
Mohawk 'Late Night Tile'



Carpet Example 9
Multi-Directional Linear Pattern
- Variation in direction alleviates visible staining and soiling.
Mohawk 'Paved Freedom Tile'



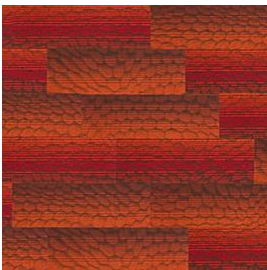
Carpet Example 10
Multi-Directional Linear Pattern
- Variation in direction alleviates visible staining and soiling.
Mohawk 'Jean Tile'



Carpet Example 11
Linear Pattern
- Pattern and colorway contribute to staining, soiling, and wear patterns being more evident.
Mohawk 'Streetscapes Tile'



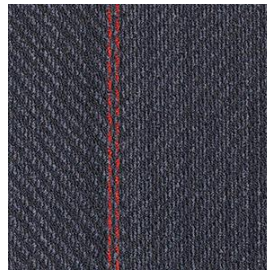
Carpet Example 12
Linear Pattern
- Pattern and colorway contribute to staining, soiling, and wear patterns being more evident.
Mohawk 'Amused II Tile'



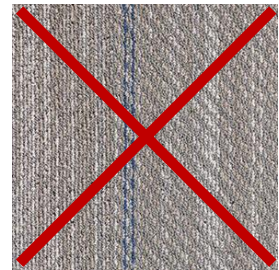
Carpet Example 13
Large Scale Organic Pattern
- Colorway alleviates visible staining, soiling, and wear patterns.
Mohawk 'Spherical Infusion Tile'



Carpet Example 14
Large Scale Organic Pattern
- Large areas of light colored negative space.
- Staining, soiling more evident.
Mohawk 'Spherical Infusion Tile'



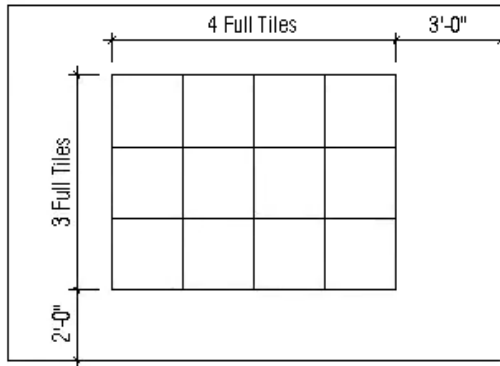
Carpet Example 15
Linear Pattern
- Colorway alleviates visible staining, soiling, and wear patterns.
Mohawk 'Hem Tile'



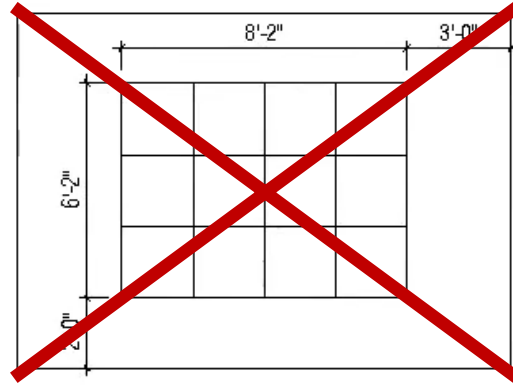
Carpet Example 16
Linear Pattern
- Pattern and colorway contribute to staining, soiling, and wear patterns being more evident.
Mohawk 'Hem Tile'

Installation Considerations

- Secure carpet tiles with manufacturer’s self-stick adhesive tabs, for example, Mohawk Flex Loc, Interface Tactiles or approved equal. Self-stick adhesive tabs generally require less floor prep than applied adhesive, allow for easy future tile removal and replacement, and less construction waste.
- When designing patterns or insets, best practice is to denote number of tiles to be used, rather than providing dimensions. This minimizes waste and labor cost (see Carpet Examples 17 and 18).

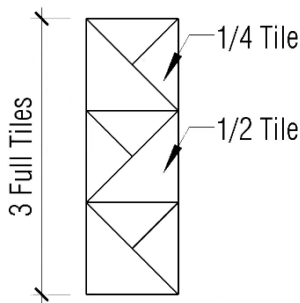


Carpet Example 17
Inset with Full Tile Annotations
Best Practice

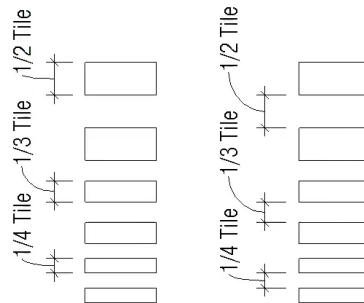


Carpet Example 18
Inset with Dimensions
Not Ideal, Creates Waste and Added Labor

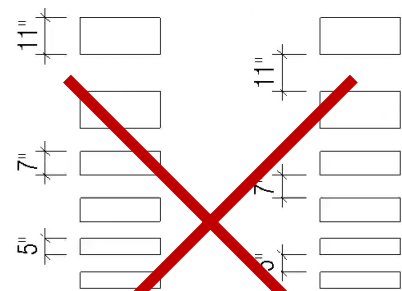
- When cutting tiles to create a pattern or inset, best practice is to use fractional increments which equate to full tile sizes (see Carpet Examples 19 and 20), rather than providing cut dimensions (see Carpet Example 21).
- Carpet tiles to be used for ‘area rugs’ (see carpet example 22). ‘Area rugs’ that reside on top of another finish, such as concrete, must have a resilient edge guard or a metal transition strip. The resilient edge guard and metal transition are utilized to alleviate carpet tile slippage and movement.
- When carpet tiles are adjacent to exposed concrete, carpet will act as a walk-off mat. Specify carpet tile selections at these transitions that minimize visible light and dark soiling such as lint and dirt.



Carpet Example 19
Pattern with Modular Increments
(Best Practice)



Carpet Example 20
Pattern with Modular Increments
(Best Practice)



Carpet Example 21
Pattern with dimensioned increments
not ideal, creates waste and added labor.

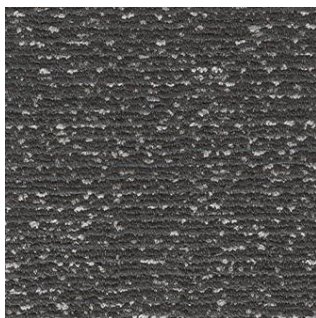


Carpet Example 22
 Carpet tile as area rug with standard resilient edge guard.

- It is the design team’s responsibility to ensure prices are equal to or less than the current pricing guidelines. General price ranges provided are for material only.
- Carpet examples 23-28 are for reference only.

Field Carpet Criteria

- Typically 65-75% (+/-) of project
- Low to moderate pattern or texture
- Medium to dark value color – typically neutral color
- Current pricing guidelines: not to exceed \$20.00 (+/-) per square yard



Carpet Example 23
 Small Scale Pattern
 - Non-Directional medium dark color.
 -Alleviates staining, soiling, and wear patterns
 Mohawk ‘Starting Over Tile - Burst 978’



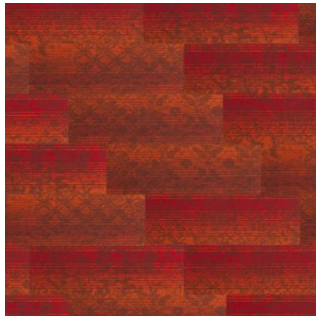
Carpet Example 24
 Multi-Directional Linear Pattern
 - Variation in direction alleviates visible staining and soiling.
 Mohawk ‘Delhi BT 225 – Ebony’



Carpet Example 25
 Multi-Directional Linear Pattern
 - Large areas of light colored negative space.
 - Staining, soiling more evident.
 Mohawk ‘Metalmorphic – Canyon Clay’

Accent and Premium Accent Carpet Criteria

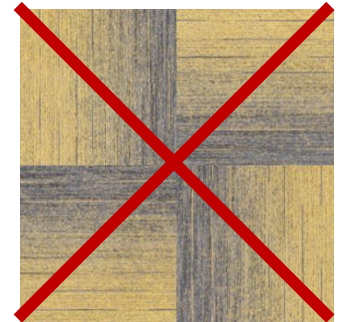
- Accent: Typically 15-25% (+/-) of the project
- Premium Accent: Typically 10-15% (+/-) of project
- Colors typically consist of vibrant, bold colors and neutrals
- Moderate, medium, or large scale patterns, which may include varying texture. Patterned styles may be bold and graphic.
- Consider using accent carpet as insets in Reception, Open Office areas, Conference Rooms, Break Out, and to denote wayfinding or highlight features in common or specialty areas.
- Accent: Current pricing guidelines: not to exceed \$22.00 (+/-)per square yard
- Premium Accent: Current pricing guidelines: not to exceed \$29.00 (+ /-) per square yard



Carpet Example 26
 Multi-Directional Linear Pattern
 - Variation of light and dark colors
 -Alleviates staining, soiling, and wear patterns.
 Mohawk 'Rediscovered – Rare'



Carpet Example 27
 Multi-Directional Linear Pattern
 - Variation in pattern direction, installation method, and colorway alleviates visible staining and soiling.
 Mohawk 'Taped Off'



Carpet Example 28
 Linear Pattern
 - Pattern and colorway contribute to staining, soiling, and wear patterns being more evident.
 Mohawk 'Pop Icon Tile'

THIS PAGE INTENTIONALLY LEFT BLANK